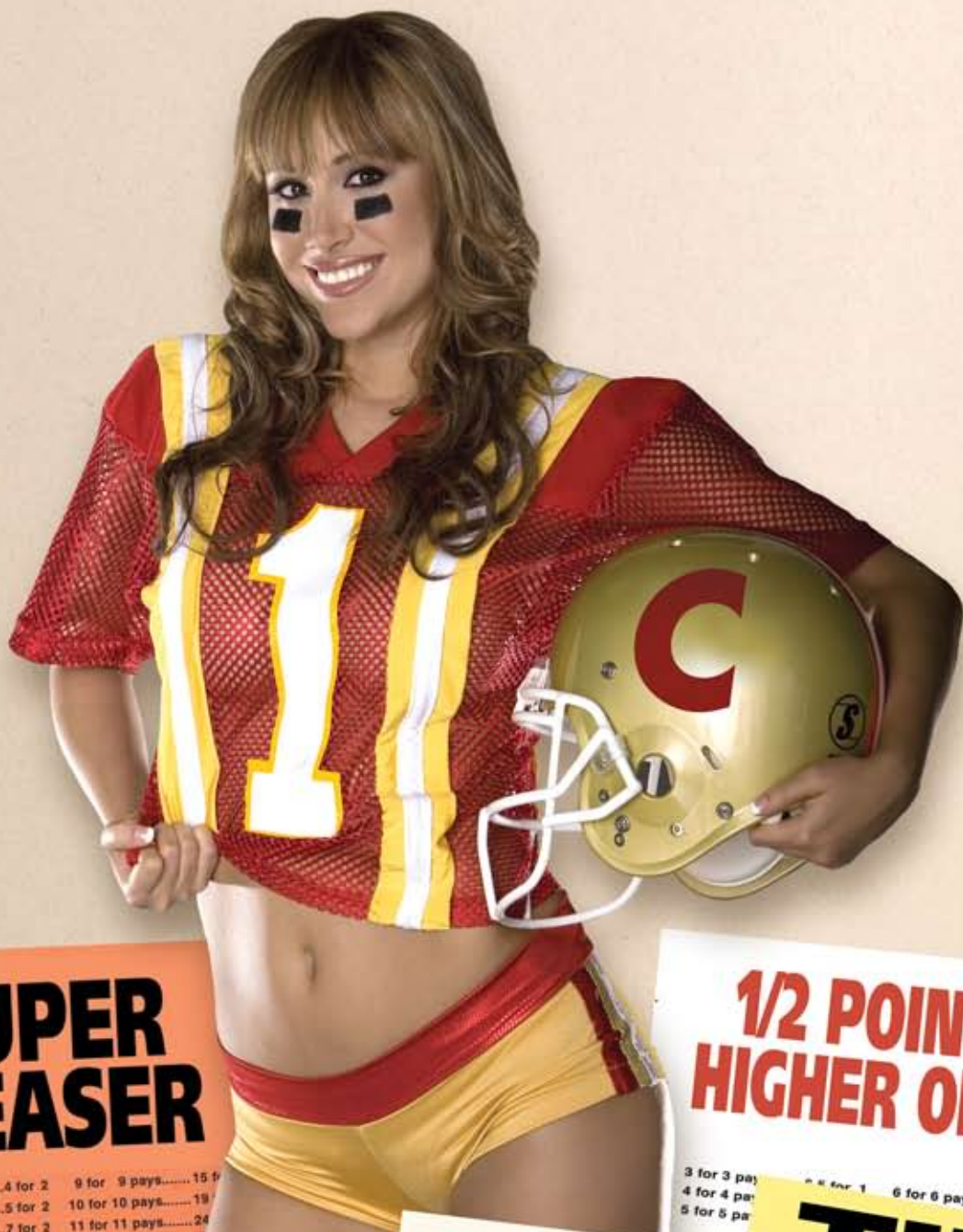


# It's Parlay Card Season



**SUPER TEASER**

**1/2 POINT HIGHER ODDS**

4 for 4 pays.....4 for 2	9 for 9 pays.....15 for 1
5 for 5 pays.....5 for 2	10 for 10 pays.....19 for 1
6 for 6 pays.....7 for 2	11 for 11 pays.....24 for 1
7 for 7 pays.....9 for 2	12 for 12 pays.....31 for 1
8 for 8 pays.....12 for 2	13 for 13 pays.....40 for 1

3 for 3 pays.....5 for 1	6 for 6 pays.....50 for 1
4 for 4 pays.....6 for 1	
5 for 5 pays.....8 for 1	

**EASY-MONEY LINE PARLAY CARD**

**MONEY LINE CARD PAYOFFS**

WINNING CREDITS	WINNING CREDITS
20 - 25% pays.....4 for 2	90 - 99%.....100 - 109
26 - 31% pays.....5 for 2	100 - 109%.....110 - 119
32 - 35% pays.....6 for 2	110 - 119%.....120 - 129
36 - 39% pays.....7 for 2	120 - 129%.....130 - 139
40 - 49% pays.....8 for 2	130 - 139%.....140 - 159
50 - 59% pays.....11 for 2	140 - 159%.....160 - 179
60 - 69% pays.....16 for 2	160 - 179%.....180 - 199
70 - 79% pays.....20 for 2	180 - 199%.....200 and up
80 - 89% pays.....30 for 2	200 and up.....200 and up

**MONEY LINE CARD**

- All Selections must win. Payouts are based on credits accumulated. Any losing selection voids winning credits.
- All cards must have, initially, a minimum of 20 selections in action provided at least 20 selections remain. Any card in which the total possible selections is reduced below 20 winning credits will be reduced to next lowest number of selections. Any card in which the total possible selections is reduced below 20 winning credits regardless of the outcome of the remaining selections will be voided.

**SUNDAY/MONDAY SPECIAL**

3 for 3 pays.....6 for 1	6 pays.....40 for 1
4 for 4 pays.....10 for 1	7 pays.....80 for 1
5 for 5 pays.....20 for 1	8 pays.....160 for 1
	150 for 1

**TIES WIN PARLAY**

3 for 3 pays.....5 for 1	6 for 6 pays.....40 for 1
4 for 4 pays.....10 for 1	7 for 7 pays.....75 for 1
5 for 5 pays.....20 for 1	8 for 8 pays.....150 for 1

**TIES WIN TEASER**

3 for 3 pays.....5 for 2	9 for 9 pays.....20 for 1
4 for 4 pays.....4 for 1	10 for 10 pays.....30 for 1
5 for 5 pays.....6 for 1	11 for 11 pays.....45 for 1
6 for 6 pays.....8 for 1	12 for 12 pays.....75 for 1
7 for 7 pays.....10 for 1	13 for 13 pays.....125 for 1
8 for 8 pays.....15 for 1	14 for 14 pays.....175 for 1
	5 for 15 pays 325 for 1

winning tickets will be paid immediately. Selections are considered no action and card will be reduced to next lowest number of plays. Cards must have three team minimum otherwise parlay is void and money will be refunded. This card's points spreads will be used in lieu of house wagering rules applicable to this card.